

QUALITY
INTEGRITY
SERVICE



AN ISO 9001:2015 & ISO 14001:2015 CO.

PRODUCT PROFILE

**Construction System Solutions,
Technical Mortars, Concrete
Admixture & Precast**

Power Plants Nuclear, Hydro	Hospitals, Hotels	Metro and Rails	Roads and Flyovers	Commercial Building	Residential Building
--------------------------------	----------------------	--------------------	-----------------------	------------------------	-------------------------

Company Profile

Blusky™ Specialty Chemicals Private Limited, headquartered in Delhi, India, is a leading provider of building materials and construction chemicals. We specialize in waterproofing solutions, technical mortars & grouts, concrete admixture and precast recognized for our expertise in the Indian construction market.

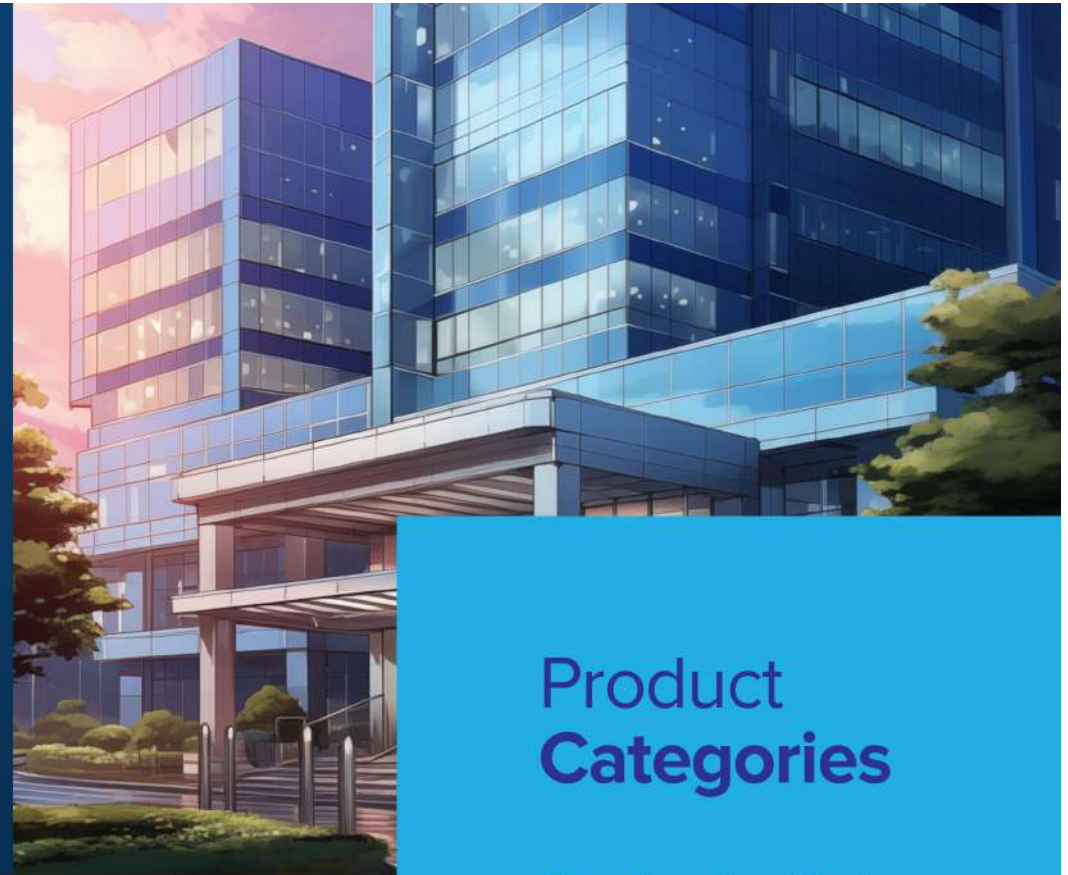
Our product range includes construction systems, concrete admixtures, precast products, and technical mortars, covering:

- Waterproofing Systems
- Protective Coatings
- Flooring Systems (Epoxy and Cementitious)
- Grouts (Epoxy and Cementitious)
- Repair and Rehabilitation
- Sealants
- Adhesives (Epoxy and Cementitious)
- Expansion and Construction Joint Systems
- Concrete Admixture
- Precast

With modern, well-equipped factories and branch offices strategically located across India (Rajasthan, Gujarat, Uttar Pradesh, Kolkata), we ensure efficient deliveries and quick response times. Our manufacturing units are ISO 9001:2015 and ISO 14001:2015 certified, guaranteeing quality products that undergo rigorous testing before reaching our customers.

As part of our commitment to being a "Total Solutions Provider," we offer comprehensive support from advising on construction specifications to providing technical on-site assistance for repair, maintenance work, surface treatments, water and damp proofing, and flooring systems.

Our team boasts over 20 years of experience, with involvement in major reference projects such as nuclear projects (Kaiga, Tarapur, Rawatbhata), metros (Ahmedabad, Mumbai) and numerous commercial and residential building projects nationwide.



Product Categories

Construction System
Solutions and
Technical Mortars

Concrete
Admixtures

Precast

QUALITY
INTEGRITY
SERVICE



Protect your structure with OUR PRODUCTS

Waterproofing

- **Flowthane PU1K** - PU based elastomeric seamless liquid membrane for roofs, balconies, basements etc.
- **Flowcrete 2K** - Multipurpose flexible cementitious, two component system ideal for damp substrate
- **Flexycoat AC** - Coloured acrylic resin based uv resistant waterproofing coating.

Protective Coatings

- **Aquafil WB** - Silane / Siloxane based water repellent compound for masonry & concrete.
- **Flowpox Coat 418** - High build pigmented chemical resistant epoxy coating.
- **Flowcoastal** - Polymer based compound for corrosion protection of steel in sea/fresh water, salt spray or salt air environment.

Grouts

- **Xcem GP** - Non-Shrink cementitious high early strength free flow grout.
- **Flowxcm C** - Polymer modified, powder expansion admixture for waterproofing plasticizing and non shrink grouting.
- **Poxycrrete 212** - Self leveling high strength pourable/injectable epoxy grouting compound.

Repair & Rehabilitation

- **Poxycrrete 21LV** - High strength, injectable epoxy with fast curing properties for micro to hard cracks in concrete.
- **PUGrout S** - Expansive aqua reactive repairing system.
- **Poxycrrete EBA** - Epoxy based bonding compound.
- **Xcem PMC60** - High strength polymer modified concrete repair mortar.
- **Xcem MC60** - High strength free flow cementitious micro concrete.

Flooring

- **Prolite SOF** - Non metallic floor hardener. Ready to use dry shake compound for abrasion resistant flooring.
- **Prolite TOP** - Metallic floor hardener for wear resistant flooring.
- **Screed SLF** - Cement based self-levelling underlayment. Can be used to repair, fill or level surfaces for new construction or repair work.

Adhesive

- **Powerfix (DIAMOND)** - High performance, Single-pack, pre-mixed water resistant powder type polymer modified multipurpose tile stone adhesive.
- **Powerfix (PLATINUM)** - High performance, Single-pack, pre-mixed water resistant powder type polymer modified multipurpose tile stone adhesive.

Expansion And Construction Joint Systems

- **Renject** - Specially designed flexible solid PVC nitrile blend (thermo-plastic rubber) covered by sponge strips strengthened by nylon braiding is installed in concrete joints to waterproof and seal cracks or voids.
- **Aquaswell Mastic** - Is an off white gun applied mastic with good adhesion to concrete steel, glass, PVC, HDPE in contact with water.
- **Aquaswell Strip** - Is a flexible strip made of a hydrophilic expanding rubber which expands when in contact with water.
- **Poliband EXP** - Is a homogenous high performance expansion joint system. It is made of functionalized thermoplastic elastomer.



Liquid Applied Membrane



BLUSKY™ FLOWTHANE PU1K

Description:

FLOWTHANE PU1K is a single pack high solid content moisture cured liquid waterproofing elastomeric membrane based on specially modified polyurethane. Ideally suited for water proofing of roof, walls and foundation.

Advantages

- Can be applied directly from the pail.
- Forms a seamless protective waterproof membrane
- Being viscous it does not run on vertical surfaces.
- Excellent adhesion
- Highly flexible even at extreme temperatures.

Uses

All purpose

Packaging

18 / 25 Kg Kit.

Coverage

0.9 Kg to 1.2 Kg per m² for 1 mm thickness depending upon the surface condition. For heavy duty 1.5 mm thickness recommended.



BLUSKY™ FLEXYCOAT AC

Description:

FLEXYCOAT AC is a flexible, breathable acrylic waterproofing membrane that can be directly applied from the pail. **FLEXYCOAT AC** - 5 layer system fabric reinforced waterproofing system is designed to overcome unevenness of roof surface by building up of waterproofing membrane thickness. This is suitable for positive waterproofing of concrete flat roof in areas with light foot traffic.

FLEXYCOAT - 3 layer system forms a flexible, breathable membrane that waterproofs external surfaces from water seepage and protects it from deterioration due to carbonation, acid or chemical attack and other types of environmental pollution.

Advantages

- Easy to apply
- High polymer paste form
- Mould and fungus resistance
- Bridges cracks and remains flexible
- Resistance to uv rays
- Non-toxic
- Available in attractive colors

Uses

5 layer system

- Waterproofing of old and new roofs
- Refurbishment of old concrete roofs and concrete gutters

3 layer system

- Waterproofing of external walls of old buildings, metal roofs, gutters and asbestos roofs.
- Waterproofing of old roof tiles.

Packaging

- Available in 20 Kg in various attractive colors

- **Other colors:** refer to our color chart
- **Standard colors:** white & grey

Coverage

Approx. 30m² / 20 Kg for 1 coat at film (dry) thickness of 0.3 mm.



BLUSKY™ FLOWCRETE 2K

Description:

FLOWCRETE 2K is a two component, elastomeric, flexible, acrylic polymer modified cementitious waterproofing protective coating system in slurry form.

Advantages

- Resistant to uv (ultra-violet) rays.
- Bonds well with all conventional cementitious and lime substrates
- Safe for water tanks containing portable water
- Establishes a breathable membrane: No blistering
- Strong resistance to chloride and sulphate attacks

Uses

- Wet areas
- Swimming pools
- Bathroom
- Kitchen
- External wall etc.

Packaging

15 / 90 Kg Kit

Coverage

1.5-2 Kg/m² for 2 coats, depending on porosity of substrate.

Liquid Applied Membrane



BLUSKY™ FLOWCRYSTAL PLUS

Description:

FLOWCRYSTAL PLUS is a cementitious waterproofing system which protects and waterproofs concrete structures by crystallization. The active formation within the pores and capillary tracts of concrete thus waterproofing the structure against penetration of water and other liquids from any direction. **FLOWCRYSTAL PLUS** gives a strong and lasting waterproofing protection against dampness and ground water hydrostatic pressure.

Advantages

- Single component and easy to apply.
- Can be used for positive or negative waterproofing of concrete structure
- Protection against rising dampness on ground slab

Uses

- Recommended for interior and exterior below grade surfaces
- **FLOWCRYSTAL PLUS** gives protection against concrete decay and chemicals react with moisture in the concrete resulting in crystalline waterborne corrosive salts
- Can be used for negative waterproofing of concrete surface the structure against penetration of water and other liquids from any and on horizontal structural slabs against hydrostatic pressure as direction. **FLOWCRYSTAL PLUS** seal gives a strong and lasting waterproofing protection it provides stronger resistance to impact and abrasion.
- Can be used for basements, wet areas, tunnels, underground, garages, planter boxes.

Packaging

25 Kg Bags

Coverage

For slurry coat/brush application method, apply at the rate of 1-1.3 Kg/m² in two coats depending on the area of application



BLUSKY™ FLOWTHANE AR

Description:

FLOWTHANE AR is a liquid applied polyurethane elastomeric waterproofing membrane specially developed for use in roof gardens. Its root resistive property prevents the plants roots from tearing the waterproof membrane as they grow & flourish in the roof garden. **FLOWTHANE AR** is a liquid applied waterproofing membrane that is easy to apply, allowing for fast, effortless & seamless application even in the garden designs that are irregular & unique.

Advantages

- Environment friendly.
- Protects against root penetration.
- Remains effective under extreme weather condition.
- Gives a seamless waterproofing system with high tensile strength.
- High durability.
- Easy to apply.

Uses

- All types of roofs, balconies, decks and garden.
- Retaining walls and basements.
- Waterproofing of planter boxes.
- Eliminates soldering of cracked non-ferrous roof valleys and flashings.

Packaging

1 + 20 or 1 + 25 Kg Pails.

Coverage

Recommended coverage approximately 0.9 to 1.2 Kg/m



BLUSKY™ FLOWCRETE 2K XL

Description:

FLOWCRETE 2K XL is a two component, high performance, elastomeric, acrylic polymer modified cementitious waterproofing protective coating system in slurry form.

Advantages

- Resistant to UV (Ultra - Violet) rays
- Develops excellent bond with most of the building materials.
- Prevents peeling and blistering
- Arrests salt petre and prevent penetration of salts into concrete & mortar.
- Unaffected by chemical attacks ranging from mild acids & strong alkalis.
- Highly durable in continuous wet service condition.
- One time application, properties improve with age.

Uses

- **FLOWCRETE 2K XL** is used as a waterproofing treatment for large roof, basement rafts, against rising dampness, retaining structures, water bodies, reservoirs, balconies, bathrooms, sunken areas, fountains, dome structures, bridge decks, podium and terraces. Also used as anti- carbonation coating.

Packaging

48 & 12 Kg Kit.

Coverage

1.5 to 2.0 Kg/M² for 2 coats, depending on porosity of substrate.

Liquid Applied Membrane



BLUSKY™ FLEXYCOAT HIC

Description:

FLEXYCOAT HIC is a cost-effective heat shielding coating that uses advanced insulation technology to reduce the interior temperature of buildings. This is specially formulated with fine spherical particles that minimize surface temperature on roof and walls by reflecting a large percentage of the radiant heat energy before it penetrates the building. This lowers interior temperature and reduces cost for cooling the building.

Advantages

- Easy to apply, non-toxic & environment friendly
- Reduces radiant heat in dwelling
- Reduces energy consumption by cooling the building
- Has anti mould and anti-fungal properties
- Electrometric qualities

Uses

- **FLEXYCOAT HIC** is ideal for roofs and walls in both commercial and wall in both commercial and residential buildings.
- **FLEXYCOAT HIC** can be applied to substrate such as concrete, render, aluminum, steel, cement, sheet, masonry, brick, wood etc.

Packaging

20 Kg plastic pail exists in brown and green colour.

Coverage

- Flat roofs: 500 micron dry film thickness i.e 1.1 m² / lit
- Pitched roof: 370 micron dry film i.e 1.5 m² / lit
- Wall (smooth) : 250 micron dry film i.e 2.2 m² / lit



BLUSKY™ FLOWCRETE

Description:

FLOWCRETE is an Acrylic Polymer based protective coating and repairing compound. **FLOWCRETE** polymer, when mixed with cement, will provide a mortar which will have much better adhesive properties, impact strength, flexural strength and it combats with thin section fragility, when compared to ordinary cement mortars.

Advantages

- Resistant to uv (Ultra-Violet) rays
- Thixotropic - can be applied in uniform thickness on vertical and horizontal surfaces
- Develops excellent bond with most of the building materials
- Prevents peeling and blistering
- Arrests salt petre and prevents penetration of salts into concrete and mortar
- Unaffected by chemical attacks ranging from mild acids to strong alkalis
- Highly durable in continuous wet service condition
- Resists corrosion and rotting
- One time application, properties improve with age
- Eco-friendly, harmless to workers

Uses

Basements, toilets, terraces, swimming pools and water towers

Material	For Single Coat On Concrete (Kg/Sq. Mtr.)	For Double Coat On Concrete (Kg/Sq. Mtr.)
Cement	0.488	0.730
FLOWCRETE Polymer	0.253	0.379

Material	1.5 mm thick
Cement	1.289 Kg/m ²
FLOWCRETE Polymer	0.670 Kg/m ²
Fine Silica sand	1.289 Kg/m ²

Packaging

20 & 200 Kg containers

FLOWCRETE SHOTCRETE / GUNITE

Cement: FLOWCRETE Polymer:

Water: Sand: Shotcrete Accelerator
100 : 15-20: 25-30 : 350: 5 (by wt.)

Preformed Membrane



BLUSKY™ POWERSHIELD APP

Description:

POWERSHIELD APP is a torch on waterproofing membrane of high performance plastomeric type APP (Attactic Polypropylene). It consists of a specially formulated bituminous compound distilled asphalt modified with selected high grade visco-elastic polymers, stabilizers and inert fillers, reinforced with a robust, non-woven polyester reinforcement.

Advantages

- Industrial Grade product enables heavy duty application
- Superior bond to substrates with seamless top
- Excellent resistance to puncture & tear
- Robust construction & high tensile strength
- Guaranteed waterproofing & long-term protection

Uses

POWERSHIELD APP membranes are ideal for general use in single / multi-layer systems. They are used on low slope concrete roofs, balconies, multistoried car parks, tunnels, for lining sewerage canals, sub grade structures and any concrete or cementitious flat surface that needs waterproofing.

Packaging

The membranes are produced in rolls with thickness of 3 mm and 4 Tmm and standard length of 10 m and 1 m width.



BLUSKY™ POWERSHIELD STICK

Description:

POWERSHIELD STICK are self-adhesive (peel and stick) membranes. These are factory fabricated waterproof sheets of predetermined thickness. These sheets are also known as membranes, are produced by coating a robust rot proof core, with an impervious elastomer modified bituminous compound. The compound is homogenous and highly flexible.

Packaging

They come in thicknesses of 1.5 and 2 mm and standard lengths of 15 m and 1 m in width.

Uses

- Waterproofing the underside or topside of slabs on-grade
- Protection of pre-stressed concrete panels or reinforced concrete cast-in-situ walls, below grade
- Waterproofing of foundation walls below as well as above grade
- Tanking of basements
- Waterproofing of pile caps, tie beams and raft foundations
- Damp proofing of wet areas such as below shower basins
- Waterproofing under tiles in Kitchens and wet areas
- Waterproofing of sewerage concrete manholes
- A vapour retarder



BLUSKY™ POWERSHIELD PREBOND HDPE

Description:

POWERSHIELD PREBOND HDPE is a unique HDPE based self-adhesive membrane fully bonded sheet membrane comprising of a virgin HDPE layer, coated with a high bond strength adhesive, & covered with a release liner, for below ground water proofing of reinforced concrete structures. It is loose laid onto prepared substrates or formwork before fixing reinforcement and casting concrete. The adhesive layer is activated when the concrete is poured on the surface & forms a permanent bond with the fresh concrete which will prevent the ingress of water around the structure. Reinforcement can be directly laid on top of the membrane & it does not require screed protection

Uses

Horizontal Surface: Mud slab is preferred. The blinding must be free of loose aggregate and sharp protrusions. An angular profiled blinding is recommended rather than a sloping or rounded substrate. The surface does not need to be dry, but standing water must be removed.
Vertical surface: Use concrete, plywood, masonry or other approved facing to provide to level and even support to the membrane. Board systems such as timber lagging must be close butted to provide support and not more than 15 mm out of alignment.

Advantages

- Pre-applied: Fixed before placing reinforcement and casting concrete
- Can be applied on damp or green concrete, gives good bonding with fresh concrete
- High flexibility and crack-bridging capabilities
- No lateral water migration between the concrete structure and the membrane system
- High water tightness tested according to various standards
- Fully and permanently bonded to the reinforced concrete structure
- Not affected if the level of water table rises and falls Resistant to aggressive conditions in natural ground water and soil
- Easy to install with selvedge on one side to provide self-adhered laps for continuity between rolls
- Made up of non-recycled / virgin HDPE for long durability
- Temporarily resistant to weathering and UV exposure during construction
- VOC free, eco-friendly material
- Sound anti-puncture performance
- Adaptable to settlement and distortion

Packaging

They come thickness of 1.2mm and standard length of 20m & 2.4 m width.

Integral



BLUSKY™ FLOWCRYSTAL ADMIX

Description:

FLOWCRYSTAL ADMIX Crystalline water proofing admixture protects and waterproofs concrete structures by crystallization. The active chemicals react with moisture in the concrete resulting in crystalline formation within the pores and capillary tracts of concrete thus waterproofing the structure against penetration of water and other liquids from any direction. **FLOWCRYSTAL ADMIX** gives a strong and lasting waterproofing protection from harsh environmental conditions. As site conditions on projects and temperature variations commonly occur please contact your BLUESKY™ technical support team for advice on the **FLOWCRYSTAL ADMIX** for your specific project.

Advantages:

Enhances protection against water ingress in concrete due to capillary action. Reduces water permeability of the concrete structure.

Advantages

- Mixed with concrete at the time of batching
- Can be used for positive or negative waterproofing of concrete structure
- Protects concrete exposed to harsh conditions
- An integral system application
- Cost effective system and process friendly
- Non-toxic
- Chemical resistance
- Crack sealing characteristics

Uses

- Foundations
- Sewage treatment plants
- Tunnels and subway systems
- Dams
- Underground structures
- Pre-cast structures Swimming pools and reservoirs

Packaging

20 / 25 Kg Bag

Dosage Rate

- Recommended dosage of between 0.8% and 1% by weight of cement



BLUSKY™ FLOWXCEL

Description:

FLOWXCEL is a normal Setting integral waterproofing compound for cement mortar and concrete with corrosion resistant properties. It contains an inbuilt integral waterproofing agent, corrosion resistant chemical, together with a chemically active ingredient which reacts with the lime released in the hydration process of the Portland cement and forms insoluble crystalline pore fillers. This combined action of it makes the concrete totally sealed, watertight mass, which not only resists the normal tendency of hardened concrete to absorb water by capillary action, but also withstand the positive water pressure. It conforms to IS: 2645-2003.

Advantages

- Ensures complete crystallization of cement particles
- Ensures water tightness of concrete against water head
- Eliminates / reduces dampness from the plastered surface of the brick work
- Protects concrete from weak acid / salt solutions, oils and hydrocarbons
- Prevents / reduces sweating, efflorescence, salt peter action
- Resists fungal growth on the plastered surface of the brick

Uses

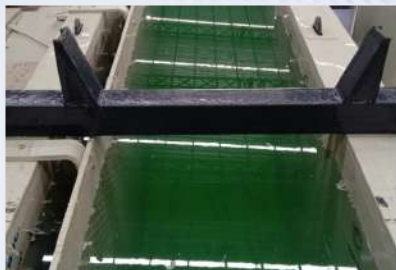
- In rendering / plastering work on all brick walls in residential & industrial structures
- Both in underground and overhead water tanks, while concreting / plastering
- In silos, basement structures and for damp-proof course in residential buildings
- For repair / maintenance work of existing damp wall, salt peter in brick work
- As an integral waterproofing compound in concrete for roof, retaining wall etc
- In marine structures and sea facing buildings

Packaging

FLOWXCEL is available in
20 / 225 Kg

Coverage

200 gm per bag of cement.



BLUSKY™ AQUAPRO

Description:

A two part water based resin system, which forms a high build resilient and flexible membrane on concrete and metal surfaces.

Uses

Ideal as waterproofing membrane, excellent remedy for seepage & dampness problems on interior or exterior surfaces of basements, reservoirs, tunnels, galleries, lift wells, roofs, balconies, retaining walls, floors, below grade car parks etc. It works markedly on freshly poured concrete.

Packaging 10 Kg / 20 Kg pails

Advantages

- Can be applied to interior or exterior surfaces
- Excellent adhesion to damp or dry surfaces, including freshly poured concrete
- May be tinted with universal paint, tinters
- Non-flammable, odorless and non-toxic after complete curing
- Can be applied on damp surfaces
- Suitable for potable water reservoirs
- Cured membrane withstands approx. 2.5 Kg /cm² (36 p.s.i) hydrostatic pressure or equivalent to around a 25 meters head of water

Coverage

- 1st Coat, Smooth surfaces 3-5 m²/Kg
- 2nd Coat Smooth surfaces 4 - 6 m²/Kg
- This coverage depends on surface porosity & water addition.
- Decrease in coverage by up to 50% can be expected on rough surface.



BLUSKY™ AQUAFIL WB

Description:

AQUAFIL WB is a solvented silane /siloxane based water repellent compound for protection of concrete and masonry work. It complies to **BS 3826-1969 Class A** and **Class B** as silicon resin based water repellent.

Advantages

- Fast action - the surface becomes highly water repellent in 2 to 3 hrs.
- Long lasting - highly durable in aggressive environment
- Porous - allows coated surface to breathe
- Invisible - does not change the colour of the surface or colour on which it is coated
- Self-cleaning - vertical surfaces cleans itself with rain water & resists where staining
- Excellent adhesion - readily adherence to most common _ substrates.
- Easy application - available in single component packs which is easy to apply or cures on its own.

Uses

AQUAFIL WB is efficient for both old and new surfaces and can be used externally and internally. As an external coat, it can be applied on exposed brick work, masonry surfaces, concrete, stone claddings, cement plaster, joints, pre-cast units etc. As an internal coat, **AQUAFIL WB** can be applied over plaster, plaster of paris, brick walls, to prevent moisture infiltration, dampness of walls plaster cracking and blistering of paint.

Packaging

5, 10, 20 Kg / Ltr.

Coverage

- 3 to 4 m²/ltr, one heavy coat is usually sufficient. For porous surfaces, an additional second coat may be applied.



BLUSKY™ FLOWPOXY COAT 418

Description:

A high build pigmented epoxy coating which provides long term protection to multiple substrates. It is cured by organic amines.

Uses

- A highly effective coating for steel and concrete surface in aggressive environment
- Long term protection against abrasion, weathering and chemical exposure.
- An economic protective / decorative coating exhibiting extreme toughness.

Advantages

- Can be applied to damp concrete without any loss of adhesion, as it is moisture insensitive
- Ideal as a body coat in protective and decorative systems
- Particularly suited to maintenance work in cool environments
- Cured film is very hard, abrasion and chemical resistant
- Excellent bond on freshly prepared concrete surfaces
- Recommended for use with a wide range of acids and alkalis, salts, organic chemicals, solvents etc.

Packaging

Available in 5 Kg & 25 Kg container.

Coverage

- 2.5 to 4 m²/Kg. for single coat.



BLUSKY™ PROLITE TOP

Description:

PROLITE TOP is a specially manufactured metallic aggregate for mixing with cement and stone or granite chips, to provide the hardest surface to floorings and pavings, which will remain wearproof, dustproof, waterproof and greaseproof. It does not affect the setting times or other properties of the cement, with which it is mixed.

Advantages

- Remarkably increases the impact, abrasion and wear resistance
- Very suitable for heavy duty operation
- Compatible with vacuum dewatered flooring
- Makes the floor easier to maintain
- Imparts waterproofing properties to the floor
- Resists capillary rise of ground water

Uses

- It is ideally suited for use in all types of industrial floors, which are subjected to heavy trucking and load movement. It can withstand the impact load due to movement of heavy load over the floor topping.
- It is specially recommended in heavy engineering factories or as workshop floor toppings, in warehouses & gangways where trollies with metal wheels or forklifts carrying heavy load frequently

Packaging

PROLITE TOP is available in 25 Kg Bag



BLUSKY™ PROLITE SOF

Description:

PROLITE SOF is a ready to use, factory processed based on specially graded emery grit (mineral aggregate), cement and some other special additives, for abrasion and wear resistant flooring/paving. It is a dry shake surface hardener for broad casting on top of freshly made green concrete.

Advantages

- Provides built in wear resistance and produces a high abrasion resistant floor surface which is more than 200% stronger than plain concrete
- Surface density will be three times higher than plain concrete, which increases the resistance to penetration of oil, grease, hydraulic fluids, ethylene glycol and many industrial chemicals
- Impact resistance is twice as that of plain concrete
- May be used in open and continuously wet areas
- Compatible with vacuum dewatered system
- Non-rusting washable and easy to maintain
- Facilitates fast construction with minimum site costs
- Bonds well with most conventional cementitious substrates

Uses

By the use of **PROLITE SOF** the top surfaces of flooring and paving can be made wear resistant and dustproof. It is ideally suited for use in all types of industrial floors, which are subjected to heavy trucking and load movement. It can withstand the impact load due to movement of heavy load over the floor topping. It is specially recommended in heavy engineering factories or as workshop floor toppings, hangers, car parks, in warehouses and gangways where trollies with metal wheels or forklifts carrying heavy load frequently.

Packaging

PROLITE SOF is available in 25 Kg Bag

Dosage

This varies from 3 Kg - 7 Kg per m² depending on the type of usage of the floor. The recommended consumption figures are stated below:

- Moderate duty - 3 Kg /m²
- Heavy duty - 5 Kg /m²
- Extra Heavy duty - 7 Kg /m²



BLUSKY™ FLOWSCREED SLF

Description:

FLOWSCREED SLF is a cement based, internal, self levelling, underlayment designed for levelling floors. **FLOWSCREED SLF** can be feather-edged and depending on the application, can minimize troweling. It requires the addition of only water to achieve a highly fluid consistency producing a smooth, level and hard surface.

Packaging

25 Kg. Bag

Coverage

One 25 Kg bag of **FLOWSCREED SLF** cover approximately 15.2 m² at 1 mm thickness

Uses

FLOWSCREED SLF is used to repair, fill or level surfaces in new construction or for corrective work. It is suitable for internal applications. **FLOWSCREED SLF** is used as an underlayment prior to installation of carpet, vinyl, tiles or other floor covering systems. It can be walked on after 4-6 hours & can receive floor coverings 12 hours after installation. **FLOWSCREED SLF** is not a wearing surface & must be protected with a compatible topping, flooring or coating

Technical Data

Final Set time	2-3 hours
Foot trafficable	<4 hours
Ready to receive floor coverings	12 hours onwards
Mixing proportions	25 Kg powder 5-6 liters of water



BLUSKY™ FLOW POXYCOTE-PRIMER

Description:

FLOW POXYCOTE-PRIMER is a low viscosity, solvent free, penetrating, two component epoxy based primer for concrete floors and walls generally used prior to application of **FLOW POXYCOAT** range of epoxy mortar or high build coatings like polyurethane and polyuria coatings and SPF. **Pack –A: Resin, Pack –B: Hardener**

Advantages

Excellent surface penetration promotes very good bonding between concrete and subsequent layer. Can be applied by brush or roller. Very good moisture barrier property. Green product, No VOC.

Uses

FLOW POXYCOTE-PRIMER is primarily designed for priming concrete and cement-sand mortar surfaces prior to application of **FLOW POXYCOTE 525 / FLOW POXYCOTE 418** and/or **FLOW POXYCOAT** range of epoxy mortar. This can also be used as sealer coat for concrete floor to make it dust free, non absorbent, easily cleaned surface where only foot traffic is present.

Packaging

3 & 6 Kg Kit



BLUSKY™ FLOW POXYCOAT-SCREED

Description:

FLOW POXYCOAT-SCREED is a high build three component solvent free epoxy floor covering system with high chemical and abrasion resistance property. It provides non-dusting, easily cleaned anti-skid floor finish.

Pack –A: Base, Pack –B: Hardener, Pack-C: Graded Filler.

Advantages

- Very high mechanical strength
- Very good abrasion and wear resistance
- Resistant to most of industrial chemicals
- Very good anti-skid property for vehicular and foot traffic
- High impermeability to water and industrial oils
- Seamless application- does not support bacterial growth

Uses

FLOW POXYCOAT-SCREED is seamless protective floor topping and coving product used in industries with medium to high vehicular traffic like power plants, pharmaceutical & fertilizer industries, bottling plants, warehouses, breweries, garages, machine shops, chemical plants, dairies, refineries, subways, etc. In areas where high degree of cleanliness is required **FLOWPOXY COAT 525 / FLOWPOXY COAT 418** shall be used as top coat with desired color finish.

Packaging

21 Kg Kit. **Pack- A** (Resin): 2Kg, **Pack-B** (Hardener):1Kg, **Pack-C** (Filler): 18 Kg.



BLUSKY™ FLOW POXYCOTE-525

Description:

FLOW POXYCOTE-525 is a high build four component solvent free self-leveling epoxy floor coating system with high chemical and abrasion resistance property. It provides non-dusting, easily cleaned, glossy floor finish. **FLOW POXYCOTE-525** is available in 3 grades depending on thickness.

For

A) 1 mm glossy finish: **FLOW POXYCOTE-525-1;**

B) 1.5-2 mm glossy finish: **FLOW POXYCOTE-525-2;**

C) 2-3 mm semi glossy finish: **FLOW POXYCOTE-525-3**

Pack-A: Resin, **Pack-B:** Hardener, **Pack-C:** Graded Filler & **Pack-D:** Pigment Paste.

Advantages

- Self-leveling property with very high Bond and Adhesive strength
- Good abrasion resistance and Chemical resistance – mostly industrial chemicals.
- Clean and hygienic seamless glossy surface

Uses

FLOW POXYCOTE-525 is seamless protective floor topping used in industries with medium to high vehicular traffic like power plants, exhibition halls, shops, pharmaceutical & fertilizer industries, bakeries, show rooms, bottling plants, warehouses, breweries, garages, dairies, hospitals, refineries, subways, electronics & computer industries, etc.

Packaging

	POXYCOTE-525 -1 13kg	POXYCOTE-525 -2 16kg	POXYCOTE-525 -3 18kg
Pack-A, Kg	4.0	4.0	4.0
Pack-B, Kg	2.0	2.0	2.0
Pack-C, Kg	6.6	9.6	11.6
Pack-D, Kg	0.4	0.4	0.4

Cementitious



BLUSKY™ FLOWGROUT 180

Description:

FLOWGROUT 180 develops high compressive strength, a typical result are given below when water / powder ratio is 0.18 at 27°C (mortar temp.)

- 300 Kg/cm sqr in 24 hours.
- 550 Kg/cm sqr in 3 days
- 650 Kg/cm sqr in 7 days
- 800 Kg/cm sar in 28 days

(Note : During winter when test temperature is usually not possible to maintain, 24 hours compressive strength will not be achieved due to delay in setting of cement .Compressive strength for 3 days and onwards will not be effected)

- Workability = Flowable
- Tensile strength (28 days) : > 48 Kg. / Cm²
- Flexural strength (28 days) : > 125 Kg. / Cm²
- Coefficient of Thermal Expansion : 11 X 10⁻⁶ / °C
- Expansion characteristic : Unrestrained
- Expansion : 1% to 4%.
- Pull-out bond strength (28 days) : > 200Kg / Cm²
- Non-metallic, thereby overcoming the disadvantages of metallic grout. Grouting mixtures containing metallic additives will oxidize and rust when exposed to moisture. Thus weakening the cohesive bond of the grout.
- Has controlled expansion and is guaranteed not to shrink. **FLOWGROUT 180** has a measured volumetric expansion within 24 hours it is completely stable, neither shrinking nor expanding. Limited expansion is necessary to ensure a rigid monolithic bond between machinery and foundation.
- Has an extremely high adhesive and pull out strength. Withstands great fluctuations of moisture, dry ness, heat and cold.
- Reduces about 60-80% of bearing failure on machinery of Rolling mills.

FLOWGROUT 180 Grout is water and oil resistant and non-corrosive. Proper graded 10 mm aggregate may be used with **FLOWGROUT 180** when the application area is wider , a typical test result is given below when water/grout ratio is 0.13 at 27 °C; Compressive strength (N/mm²) with proper graded 10 mm aggregates:

Age of the grout	Percentage of 10mm aggregated added		
	50%	75%	100%
1 Day	30	35	40
3 Days	50	55	60
7 Days	60	65	70
28 Days	70	75	80

Uses

Grouting of machine base plates, column bases, anchor bolts, bases of heavy equipment's, bridge bearings. Facilitates early commissioning of equipment involving high vibration and requiring high early strength. It is used and specified by major utilities like Steel project, High way Department and Machinery and Turbine manufacturers far and wide.

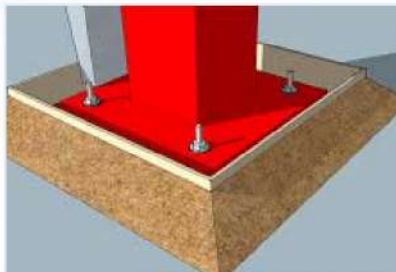
Packaging

FLOWGROUT 180 is available in 25 Kg. Bag

Yield

2000-2100 Kg of **FLOWGROUT 180** m³

Epoxy



BLUSKY™ POXYCRETE 217

Description:

POXYCRETE 217 is a three components solvent free, free flowing, fast curing pourable epoxy grout. It conforms to **ASTM C881, Type 1**.

Advantages

- Can be poured/injected into concrete for carrying out structural repairs
- Cured resin possesses high mechanical strength, excellent adhesion, non - shrinking properties and a chemical resistance property
- Can be used as a sealing material for cracks and voids. Although **POXYCRETE 217** has a high strength, the cured material is not brittle and retains a slight flexible nature
- It is supplied in pre-measured quantities of component-A (Resin) , component-B (Hardener) and component-C (Special Aggregate) according to the mixing proportion

Uses

As an injection / pour able epoxy grout with good adhesion to dry concrete, mortar, stone, steel and wood. It is used to fill and seal voids / cracks / cavities in structures such as bridges and other civil engineering buildings, industrial and residential buildings, e.g. columns, beams, foundations, walls, floors and water retaining structures.

Packaging

POXYCRETE 217 is available in 10 / 20 Kg.

Consumption

- 1250- 1350 Kg /m³



BLUSKY™ XCEM 60HES

Description:

BLUSKY™ XCEM 60HES is a single component ready to use, non-shrink, chloride free, cement based free flowing high early strength and early setting grout that develops high compressive strength within 12 hours. It requires only addition of water at site. It consists of Portland cement and special chemicals to impart non shrinkage, high fluidity, high strength etc. It is a specially designed grout which gives for high early strength in comparison to the normal general purpose grouts.

Uses

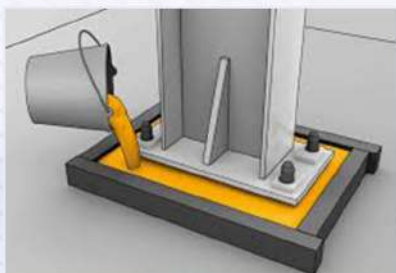
It facilitates early commissioning of equipment involving high vibration and requiring high early strength. Crane rail soleplates, DG Set and pumps, Column bases, Bridge bearing pads, Is ready to use with adjustable consistency and develops high early strength. It is non-corrosive to iron and steel. It gives high ultimate strength. Can be pumped through small nozzles over great distances. Contains no harmful chemicals and it is safe to handle.

Advantages

- **BLUSKY™ XCEM 60HES** is pre-mixed at our factory under strict quality control that requires no complicated job-site
- mixing, other than the addition of water.
- Facilitates easy handling and storage as **BLUSKY™ XCEM 60HES** Grout is protected in a vapour barrier bag that
- prevents exposure to the elements.
- Eliminates shrinkage. It has flowable consistency, good workability and excellent void filling action (self-leveling).

Packaging

25 Kg waterproof laminated HDPE bag



BLUSKY™ XCEM GP80

Description:

BLUSKY™ XCEM GP80 is a Chloride free, cement based free flowing, very high ultimate strength, non-metallic, non-shrink grout. The material is based on cements, graded aggregates, some special polymers and additives which impart controlled expansion of mortar and minimizes water demand, thus ensuring high compressive strength and long term durability. It complies with CRD C621 83 of the Corps of Engineers (USA) specification, ASTM C827 and C1107.

Advantages

BLUSKY™ XCEM GP80 grout is a consistent continually controlled mixture. Pre-mixing at the factory under strict quality control that requires no complicated jobsite mixing or skill, other than the addition of water. Facilitates easy handling and storage **BLUSKY™ XCEMGP80** Grout is protected in a vapour barrier bag that prevents exposure to the elements. Eliminates shrinkage, has flowable consistency, good workability and excellent void filling action (self-leveling). Ready to use and allows ample time for finishing work. Can be poured, poked, pumped, dry-packed and rammed. If **BLUSKY™ XCEMGP80** Grout is poured or vibrated into place there is no segregation.

Uses

Grouting of machine base plates, column bases, anchor bolts, bridge bearings. Facilitates early commissioning of equipment subjected to high vibration and requiring high early strength.

Packaging

25 Kg waterproof laminated HDPE bag

Consumption

1950-2075 Kg. of **BLUSKY™ XCEM GP80** /m³

Cementitious



BLUSKY™ FLOWXCEM-C

Description:

FLOWXCEM-C is specially formulated hydrogen free grouting aid. It is a free-flowing powder for addition to neat cement mixes. It plasticizes the mix, allowing for substantial reduction in water without affecting the fluidity, thus improving the strength and impermeability of the grout. During the setting period of the grout, it produces controlled expansion to compensate the normal drying shrinkage of cement. This ensures complete filling of voids and prevents formation of porous sections. It also imparts surface active properties and controlled volume increase during reaction; thus even the smallest cracks and pores can be impregnated.

Advantages

- Drastically improves the fluidity and flowability of the mix
- Ensures high early strength and rapid gain of later strength
- Increased flexural and tensile strength
- Provides additional resistance to dynamic and repetitive loading
- Compensates cement shrinkage by controlled expansion
- Withstands thermal movements to provide improved dimensional stability

Uses

FLOWXCEM-C is used as an admixture for injection grouting to effectively waterproof and stop leaks in underground structures, basements, tunnels, lift wells, retaining walls, dams, water reservoirs, pressure ducts and other water retaining structures. It is also recommended for grouting pre-stressed members machine bases, column bases (steel and precast concrete) anchor bolts etc. and wherever a non-settling, non-bleeding, expanding grout is required. FLOWXCEM-C can also be used as an additive to produce flowable expansion (non shrink) concrete (with smaller sized graded aggregates are preferable) mortar.

Packaging

FLOWXCEM-C is available in 20 / 25 Kg. Bag

Dosage

The rate of addition varies from 0.5% - 4% by weight of dry cement.
The optimum dosage depends on the nature of the work.



BLUSKY™ XCEM GP

Description:

XCEM GP a ready to use blend of dry powder, which on addition of clean water produce a free flowing, non-shrink grout. The material is based on cements, graded aggregates, fillers and additives which impart controlled expansion of mortar and reduces water demand, thus ensuring high early strength and long-term durability.

Advantages

- Controlled expansion to ensure positive surface contact.
- Quickly develops high compressive strength to facilitate early reinstatement.
- High ultimate strength and low permeability.
- Chloride free and non-metallic, hence no rusting or staining on exposed edges.
- Pre-mixed, addition of water only needed.
- Easy to pour due to its free flowing and self-levelling nature, can be pumped or poured into restricted locations.
- Excellent bond strength.

Uses

Grouting of machine base plates, column bases, anchor bolts, bridge bearings. Facilitates early commissioning of equipment subjected to high vibration and requiring high early strength. For repairs to damaged reinforced concrete elements. Also be used for pointing and sealing.

Packaging

XCEM GP Grout is available in 25 Kg. Bag

Consumption

1850-1975 Kg. of XCEM GP/m²

Technical Advantages

1 day	: 200
3 days	: 300
7 days	: 400
28 days	: 525
Workability	: Flowable
Tensile Strength (min)	: 25 Kg/cm ² (28 days)
Flexural Strength (min)	: 75 Kg/cm ² (28 days)
Coefficient of Thermal Expansion	: Compatible with concrete and steel
Expansion Characteristic	: Unrestricted expansion – 1% to 4%
Fresh Wet Density	: 2100 – 2250 Kg./ cm ³

Non-metallic, thereby overcoming the disadvantages of metallic grout. Grouting mixtures containing metallic additives will oxidize and rust when exposed to moisture. Thus weakening the cohesive bond of the grout.

Has controlled expansion and is guaranteed not to shrink. XCEM GP has a measured volumetric expansion within 24 hours it is completely stable, neither shrinking nor expanding. Limited expansion is necessary to ensure a rigid monolithic bond between machinery and foundation.

Has an extremely high adhesive and pull out strength. Withstands great fluctuation of moisture, dryness, heat and cold.

Reduces about 60-80% of bearing failure on machinery of Rolling mills.



BLUSKY™ POLIGROUT-S

Description:

POLIGROUT-S is a low viscous liquid which reacts with water in a controlled manner to form a swelling resilient adhesive, solid in density and strength appropriate to the designed task. When impregnated under pressure into leaking structures and through the process of polymerization, a permanent flexible water barrier is formed.

Advantages

- **POLIGROUT-S** has a very remarkable solidifying property even in ground where water flow is violent. It stops water from oozing and solidifies the ground with high strength.
- **POLIGROUT-S** exerts successful solidifying property in all types of water, such as sea water, mineral water and those containing acid and alkali
- **POLIGROUT-S** is extremely stable both chemically and physically and will not be damaged by any bacterium

- **POLIGROUT-S** is completely non-pollutant to the water it contacts and has no effect on potable water, fish or marine life
- The coefficient of permeability of 10⁻⁷ to 10⁻⁹ mm/sec. indicates the impermeability of soil solidified by **POLIGROUT-S**. This also accounts for the excellent property of **POLIGROUT-S** in stopping water from oozing.
- **POLIGROUT-S** possesses excellent adhesiveness to soil particles and it is therefore also useful in landslide prevention

Uses

- **POLIGROUT-S** has versatile uses and works extremely well for all cases especially on conventional grouting methods to stop leakages have failed
- **POLIGROUT-S** has successfully performed under certain most challenging conditions, where satisfied users have referred it as a magic product, to achieve almost impossible solutions

Packaging 10 / 20 Kg. container



BLUSKY™ POXYCRETE EBA

Description:

POXYCRETE EBA is two-component epoxy resin bonding system, comprising pack-A (resin), Pack-B (catalyst) at a ratio of 2:1 by weight.

Advantages

- Provides a permanent bond of far better strength than the tensile strength of the concrete itself.
- Can be used as bonding agent for mortars, renders, stone, steel, iron etc.
- Cures in both dry and damp conditions
- When concrete cubes bonded with **POXYCRETE EBA** are tested for compressive strength, failures on the concrete mass, but never on the bonded plane.
- Easy to mix and apply
- Thixotropic - can be applied on vertical and overhead surfaces without sagging
- Excellent adhesion to most building material

Uses

- It is mainly used to bond permanently freshly mixed concrete or mortar, glazed bricks, tiles, steel or other structural material to old sound concrete. It is based on a 100% epoxy formulation and contains no solvents or water diluents.
- **POXYCRETE EBA** is a time tested dimensionally stable compound, which has been extensively used all over India for structural bonding.

Packaging

POXYCRETE EBA is available in 6 Kg. & 9 Kg. Kits. All packs contain pre-measured components of packs - A and B.

Coverage

POXYCRETE EBA will cover at the ratio of 0.2 - 0.8 Kg/sqm depending on the surface porosity, texture and working temperature.



BLUSKY™ XCEM MC 60

Description:

XCEM MC 60 a ready to use blend of dry powder, which on addition of clean water produces a free flowing, non-shrink micro concrete / repair concrete mix. The material is based on cements, graded aggregates, fillers and additives which impart controlled expansion of mortar and minimize water demand, thus ensuring high early and ultimate strength and long term durability.

Uses

For repairs to reinforced concrete elements, encasement to damaged concrete, sealing of major cracks of concrete etc, particularly where access is restricted & where vibration or compaction of placed material is difficult or impossible. Grouting of machine base plates, column bases, anchor bolts, bridge bearings. Facilitates early commissioning of equipment subjected to high vibration & high early and ultimate strength.

Advantages

- Controlled expansion to ensure positive surface contact
- Quickly develops high compressive strength to facilitate early reinstatement
- High ultimate strength and low permeability
- Chloride free and non-metallic, hence no rusting or staining on exposed edges
- Pre-mixed, addition of water only needed
- Easy to pour due to its free flowing and self leveling nature, can be pumped or poured into restricted locations
- Excellent bond strength
- Excellent plasticity during placement and requires no vibrations

Packaging

XCEM MC 60 Grout is available in 25 Kg. Bags.

Coverage

Bag yields approximately 13.5 litres of mortar.

Repair and Rehabilitation



BLUSKY™ POXYCRETE 2115

Description:

POXYCRETE 2115 is three components solvent free, fast curing, high strength epoxy mortar.

Advantages

- For carrying out structural repairs it can be filled into concrete/mortar voids/pockets
- Cured resin possesses high mechanical strength, excellent adhesion, non-shrinking properties and a chemical resistance property
- Can be used as a Epoxy Mastic
- Although POXYCRETE 2115 has a high strength, the cured material is not brittle and retains a slight flexible nature
- It is supplied in pre-measured quantities of component-A (Resin), component-B (Hardener) and component-C (Special Aggregate) according to the mixing proportion

Uses

The cured resin possesses high mechanical strength, excellent adhesion, practically no shrinkage and a chemical resistance property which is used as bedding or under filling mortar or to repair horizontal concrete surfaces such as Industrial Floors, Kerbstones, Joint arises in the Highways, Bridge Decks and Concrete Runways

Packaging

POXYCRETE 2115 is available in 27 / 54 Kg Kits

Dosage

1950-2050 Kg/m²



BLUSKY™ POLICAULK PS

Description:

A two component Polysulphide rubber joint sealant based on a low molecular weight polymer conforming BS-4254.

Uses

Sealing joints in water retaining structures, roofs, external walls and cladding, floors partition and ceilings.

Packaging

Available in 4 Kg. & 6.5 Kg Kit

Advantages

- Excellent adhesion to most building materials including aluminium, stainless steel, glass, concrete, marble, stone, brick, masonry block, ceramic and quarry tiles, timber etc
- Forms a tough elastic rubber like seal
- Resilient, recovers the original width after expansion and contraction without losing the surface bond
- Resistant to water, sunlight, oxidation, corrosive fumes, oils, petrol, dilutes acids and alkalis, salt spray and many aliphatic and aromatic solvents.
- Self levelling, after pouring in horizontal joint levels itself



BLUSKY™ POLICAULK PU

Description:

POLICAULK-PU S/NS is a Polyurethane resin based elastomeric sealant for vertical / horizontal joints. It is fuel and chemical resistant. There are two types of polyurethane resin based sealant, one is self-leveling / sag grade (POLICAULK-PU S) and another is non-sag grade (POLICAULK-PU NS).

Uses

For sealing vertical / horizontal moving joints in highways, bridges, runways, airport

Packaging

Available in 310ml / 600ml Kit

Advantages

- Quick initial cure to minimize down time
- Resistant to wide range of chemicals, water, u.v., oils & solvents ?
- May be used in joints with damp sides with correct primer.
- Excellent tensile strength
- Economical to use and easily mixed

Technical Data

Width (mm) \ Depth (mm)	Length filled POLICAULK PU S/NS (M)				
	5	10	15	20	25
5	28.5	14.3	9.5	7.1	5.7
10	14.3	7.1	4.8	3.6	2.9
15	9.5	4.8	3.2	2.4	1.9
20	7.1	3.2	2.4	1.8	1.4
25	5.7	2.9	1.9	1.4	1.1



BLUSKY™ POWERFIX (GOLD)

Description:

POWERFIX (GOLD) is a ready-to-use, thin or thick bed, water resistant, pre-mixed -Can be used on damp substrates Thixotropic property single component, cementitious polymer modified multipurpose tile adhesive in powder form, for fixing ceramic, mosaic, marble & granite tiles.

Uses

- Bonding ceramic, mosaic, marble and granite tiles to concrete surfaces floors and walls, Can be used in shower recesses and swimming pools where continuous or intermittent immersion in water occurs.
- It can also be used for fixing aerated autoclave lightweight concrete blocks from fly Ash (AAC) insulating & acoustic boards based on expanded polystyrene plastics.

Advantages

POWERFIX (GOLD) gives the user, the following benefits

- Can be used on damp bond strength
- Offers high adhesive bond strength
- Excellent slip resistance
- Highly early bond strength
- Fast curing
- Water resistance
- Long open wet time (up to 30 minutes)
- Thixotropic property
- Tropicalised and eco-friendly, offers no health hazards to users.

Coverage

3.5 to 4.0 Kg per sq.m. (approx. at 3 mm tile bed thickness.)

Packaging

POWERFIX (GOLD) is available in 20 / 25 Kg. Bag



BLUSKY™ POWERFIX (PLATINUM)

Description:

POWERFLIX (PLATINUM) is a high performance ready-to-use, thin or thick bed, water resistant, pre-mixed single component, Grey/white cementitious polymer modified high bonding strength and highly flexible tile adhesive in powder form, for fixing ceramic, mosaic, marble and granite tiles.

Uses

- Bonding ceramic, mosaic, marble and granite tiles to concrete surfaces floors and walls. Can be used in shower recesses and swimming pools where continuous or intermittent immersion in water occurs.
- It can also be used for fixing aerated autoclave lightweight concrete blocks from fly ash (AAC) insulating and acoustic boards based on expanded polystyrene plastics.

Advantages

POWERFLIX (PLATINUM) gives the user, the following benefits

- Can be used on damp substrates
- Offers high adhesive bond strength
- Excellent slip resistance
- High early strength
- Fast curing

Coverage

3.5 to 4.0 Kg per sq.m. (approx.,) at 3 mm tile bed thickness.

Packaging

POWERFLIX (PLATINUM) is available in 20 / 25 Kg. Bag



BLUSKY™ POWERFIX (DIAMOND)

Description:

POWERFIX (DIAMOND) is a high performance Grey/white cement based, high strength adhesive for fixing tiles/stones. The set adhesive is water-resistant and suitable for use in wet areas like swimming pools and water bodies. **POWERFIX (DIAMOND)** Grey/ White is ideal for fixing vitrified tiles, industrial grade tiles, natural stones on wall/floor in interior/ exterior situations.

Uses

- New substrates: Concrete walls & floor, Cement sand screed, Cement sand render
- Renovation works on existing: Unglazed tiles, Hard natural stones, Glazed tiles (vitrified and ceramic tiles), Mosaic tiles and In-situ mosaic flooring.

Advantages

POWERFIX (DIAMOND) give the user, the following benefits

- Very high bond strength
- Non-slip
- Easy mixing, smooth application & better workability Enhanced flexibility
- Adhesion can be obtained with addition of FLOWBOND LATEX (latex additive)
- Water resistant
- Dry Condition
- Heat Aging Condition
- Wet Condition

Coverage

3.5 to 4.0 Kg per sq.m (Approx.) at 3mm tile bed thickness.

Packaging

POWERFIX (DIAMOND) is available in 20 / 25 Kg. Bag



BLUSKY™ POWERFIX (SILVER)

Description:

POWERFIX (SILVER) Grey, polymer modified adhesive suitable for fixing porous clay & ceramic tiles of small format (up to 300mm x 300mm) on walls & floors in interior dry situations on cement-based backgrounds.

Note: Not recommended for direct use onto gypsum plaster (wall finishes), paint or metal.

Advantages

- Can be used on damp substrates.
- Offers high adhesive bond strength, excellent slip resistance.
- High early strength, fast curing.
- Water resistant, Thixotropic property.
- Tropicalized and eco-friendly, offers no health hazards
- Smooth application & better workability, Economical.
- Enhanced flexibility & adhesion can be obtained with addition of admix **BLUSKY™ FLOWBOND LATEX** (latex additive)

Uses

- Concrete walls & floor, Cement sand screed, Cement sand render.
- Fiber-cement sheet, plasterboard on walls
- Compressed fiber-cement sheet on floors
- BLUSKY™ liquid applied under tile waterproofing membranes
- Existing ceramic tiles (internal dry areas)
- Ceramic Tile Underlay

Coverage

Approx. 1.3 to 1.4 Kg /mm/m² cementitious material

Packaging

25 & 20 Kg waterproof laminated HDPE Bag



BLUSKY™ BLOCKFIX HBA

Description:

BLOCKFIX HBA is a ready-to-use, thin or thick bed, water resistant, pre-mixed single component; cementitious polymer modified high strength adhesive in powder form, for fixing AAC blocks, Concrete blocks, fly ash bricks etc.

Uses

- Fixing AAC blocks, Concrete blocks, fly ash bricks & Aerated Autoclave Lightweight Concrete Blocks and insulating and acoustic boards based on expanded polystyrene plastics etc.
- It can also be used for fixing Bonding Ceramic, Mosaic, and Tiles to concrete surfaces floors and walls. Can be used in shower recesses and swimming pools where continuous or intermittent immersion in water occurs.

Advantages

- Can be used on damp substrates
- Offers high adhesive bond strength
- Excellent slip resistance
- High early strength
- Fast curing
- Water resistant
- Long open wet time
- Thixotropic property
- Tropicalized and eco-friendly, offers no health hazards to users.
- Economical

Coverage

~3 -4 kg powder required / Sq.m for 3 mm

Packaging

40 Kgs waterproof laminated HDPE Bag



BLUSKY™ POLIFLEX EPA

Description:

POLIFLEX EPA is a fast curing, two component specially designed Epoxy Adhesive material for bonding TPE Based expansion Joint tape, metal plate, plywood, asbestos, etc. to concrete. It hardens in few hours. It is a solvent free thixotropic high strength compound. It is used as general purpose adhesive for many applications conforming to **ASTM C 881. Part A : Base – White ; Part B : Hardener – Black**

Advantages

- Non slump & Primer less.
- High initial and ultimate strengths.
- Impermeable to liquids & water vapor.
- Suitable for dry and slight damp concrete surfaces.
- Hardening is not affected by humidity.
- Thixotropic: non-sag in vertical & overhead applications.
- Solvent free & Hardens without shrinkage.
- Colored Parts (for homogeneous mixing).

Uses

- Used as an epoxy adhesive for BLUSKY™ POLIBAND EXP system.
- Particularly suited for maintenance work in a situation where time is a Constraint.
- A highly effective adhesive for most building material including steel and concrete surface in an aggressive environment.
- Used in situations where long term protection against abrasion, weathering and chemical exposure is high.
- Can be used for bedding thin sheets of membranes etc.
- Can be used as spout sealing compound
- Can be used as groove filling on vertical as well as overhead application.

Packaging

3 & 6 Kg Kit



BLUSKY™ POWERFIX ETA

Description:

POWERFIX ETA is a solvent free thixotropic, two part epoxy adhesive especially formulated for bonding heavy duty ceramic tiles, marble, granite slabs etc. on concrete/masonry substrates.

It can be used for

Uses

- Used as an Epoxy Tile Adhesive for masonry/concrete substrate and provides an excellent bond. It can be used as a bedding and pointing material for fixing stone, heavy duty ceramic and cement tiles, Marble, Granite slabs etc. on cementitious substrates. It can be used for Tile on tile application.

Advantages

- Non slump & Primer less.
- High initial and ultimate strengths.
- Impermeable to liquids and water vapor.
- Suitable for dry and slight damp concrete surfaces.
- Hardening is not affected by humidity.
- Thixotropic: non-sag in vertical and overhead applications.
- Solvent free & Hardens without shrinkage. Different colored Parts (for homogeneous mixing).

Packaging

3 & 6 Kg Kit



BLUSKY™ POWER PLAST

Description:

POWER PLAST is a cement based plastering material composed of hydraulic binders, natural sand, selected graded aggregates, special fibers, and special additives. It is supplied as a dry powder in bags/bulk ready to use on site, which requires only the addition of clean water to produce cohesive mortar. **POWER PLAST** is specially designed for application by spray machine and it can be used manually if required, and contains special shrinkage control additive and provides good adhesion with uniform color surface. **POWER PLAST** can be applied at thicknesses ranging from 10mm to 25mm.

Uses

- Internal & external applications
- Concrete Surface
 - Brick Surface.
 - AAC Block Surface
 - Stone Surface, etc.

Advantages

- Fast mixing application.
- Contains special additive that reduces friction and prolongs lifespan of equipment.
- Factory controlled pre-blend ensures consistent high quality. Requires only addition of water on-site at the time of usage. Uniform color/mass.
- Improved workability & curing.
- Easy application with uniform work flow enables high productivity & superior finishing.
- Internal & external applications.
- Strong adhesion on variety of substrates.
- Shrinkages control reduces surface cracks.
- Suitable for humid & dry conditions.

Coverage

3.5 to 4.0 Kg per sq.m. (approx.) at 3 mm tile bed thickness.

Packaging

40 Kgs Waterproof Bag Under normal conditions, the coverage of **POWER PLAST** for a 40 kg Bag is

Plaster Thickness	Coverage(Sq.ft)
6 to 8mm	30 to 40
10 to 12mm	22 to 25
15 to 17mm	15 to 20



BLUSKY™ REINJECT

Description:

Grouting tube is specially designed flexible solid PVC nitrile blend (thermoplastic rubber) covered by sponge strips strengthened by nylon braiding which is installed in concrete joints to waterproof and seal any crack or voids in the joint area to eliminate possibilities of leakage in future

Uses

- All underground construction joints
- Power stations
- Metro railways etc



BLUSKY™ AQUASWELL MASTIC

Description:

AQUASWELL MASTIC is an off-white gun applied mastic with good adhesion to concrete steel, glass, PVC, HDPE in contact with water, **AQUASWELL MASTIC** will expand up to min 250% and provide a durable joint sealant with constant adhesion and expansion features.

Uses

- Sealing joints in cast in place concrete (even on rough surfaces).
- Sealing joints in precast segments (i.e. manholes, box culverts, cable ducts & pipes)
- Sealing around steel H-beams
- Sealing between rough surfaces (i.e. slurry walls) and concrete slabs
- Bonding strip sealants to rough surfaces
- Sealing around bolt spacers and void formers.



BLUSKY™ AQUASWELL STRIP

Description:

AQUASWELL STRIP is a flexible strip made of a hydrophilic expanding rubber (chemically modified natural or synthetic rubber) which expands when it comes in contact with water and a great number of other liquids. It provide simple but effective waterproofing of construction joints in concrete structures..

Uses

- **AQUASWELL STRIP** has been developed to resolve the most difficult waterproofing problem in nearly all areas of the construction sector. The most common applications are construction and cold joints in concrete, pipe penetrations, sewer systems, subterranean prefabricated concrete elements, temporary opening etc.
- **AQUASWELL STRIP** has already proven its efficiency on the construction of water treatment plants, underground car park, water reservoirs, swimming pools, metro systems and other concrete constructions under a relatively high water pressure.



BLUSKY™ POLIBOND EXP

Description:

POLIBOND EXP is a homogenous high performance expansion joint system. It is made of functionalized thermoplastic elastomer.

Uses

For installation with **POXYFLEX EPA** (solvent free thixotropic epoxy adhesive) on various building expansion joints in critical areas with high and /or frequent movements.

Advantages

- Excellent elasticity accommodates high structural movement.
- Very good low temperature flexibility and high temperature stability.
- Excellent weather and chemical including wide pH range resistance.
- Resistance to root penetration.

Packaging

POLIBOND EXP is available in 200 mm x 25 mtr and 300 mm x25 mtr. roll.

Note: Other size available on requirement.

Polycarboxylate Ether Base Admixture



BLUSKY™ FLOWCRETE D811

Description:

FLOWCRETE D811 is a new generation polycarboxylate ether based multi range plasticizer based on expertise hybrid polymers technology. To provide;

- A wide scale of dosage
- Better flow & retention
- A moderate water reduction
- Homogenous concrete

Advantages

Thanks to specifically designed molecular structure, **FLOWCRETE D811** has a great flexibility; thanks to its large scale of dosage, it can be used in great range of concrete with desired fluidity & workability retention. It allows optimization of dosage of cement in order to obtain a specific class of resistance. At equal plasticity, and after reducing mixing water:

- Concrete capacity is improved
- Capillary absorption is reduced

Depending on dosage, a relative increase of mechanical strength is observed at 24 hours & is a great advantage over Old generation available Admixtures in the market.

Uses

- All cement and cementitious types.
- Single admixture for wide range of concrete.
- Concrete using moderate to high SCM.
- To make regular concrete better.

Dosage

Optimum dosage can only be established after trials, taking into account the rheological characteristics and the required mechanical performances. Rate of addition is generally in the range of 0.2-2.0% by wt of cement and cementitious material

Packaging

225 Kgs Barrel & bulk in 10 / 15 KL tanker

Sulfonated Polynaphthalene Based Admixture



BLUSKY™ FLOWCRETE HS 1260

Description:

FLOWCRETE HS 1260 is a water reducing plasticizer based on modified sulfonated polynaphthalene. It acts on:

- The dispersion of Cementitious particles in concrete
- The cohesion of fresh concrete
- Workability retention properties

The use of **FLOWCRETE HS 1260** is particularly recommended for Jobsite concrete requiring homogenous concrete without any segregation, bleeding which should have stable workability with time. It also acts as integral water-proofer for concrete.

Uses

- All cement types, esp. PPC
- Regular Reinforced Concrete
- Pumped Concrete
- Liquid retaining structures

Advantages

FLOWCRETE HS 1260 produces cohesive concrete for jobsite application normally for grades of concrete between M20 to M35. For an equivalent plasticity, after reducing quantity of mixing water (up to 20%) thanks to this admixture; concrete is denser with less capillary action. Depending on the dosage, produces concrete with an increased compressive strength. It has a relatively weak retarding action, retains workability for 1 to 1½ hour and does not affect hydration of cement.

Packaging

225 Kgs Barrel & bulk in 10/15 KL tanker

Curing Agent - Wax Based/Water Based



BLUSKY™ FLOWCURE-W

Description:

FLOWCURE-W is a supreme quality membrane forming, ready to use, white emulsion of specially blended synthetic waxes based curing compound for application on fresh concrete, mortar and other cement coverings.

Uses

- Protection of elements with high surface/volume Ratio: Slabs, roads, concrete highway
- Protection of concrete/mortar subject to adverse Drying effects at early age (high ambient temp, wind)
- Precast Concrete

Advantages

- **FLOWCURE-W** forms a protective film when drying, which prevents concrete and mortar from desiccation.
- This enables effective hydration of the cement particles and limits early age cracking and drying shrinkage.
- A surface treated with **FLOWCURE-W** is initially white in order to easily identify the coated areas.
- Unlike moisture curing, this has a single application - forms moisture barrier throughout the whole curing period and easy and safe to apply.

Packaging

50, 100, 200 Kgs Barrel

Curing Agent - Acrylic Emulsion /Water Based



BLUSKY™ FLOWCURE-AC

Description:

FLOWCURE-AC is a water-based slightly viscous acrylic emulsion solution which dries to a colorless stain free surface when applied to concrete

Uses

- Protection of elements with high surface/volume Ratio: Slabs, roads, concrete highway
- Protection of concrete/mortar subject to adverse Drying effects at early age (high ambient temp, wind)
- Precast Concrete

Advantages

- BLUSKY™**FLOWCURE-AC** is compatible for water retaining structures (potable water).
- Economical, single application reduces incidence of shrinkage cracks.
- Promotes better strength gain characteristics.
- Useful as a dust-proofer and surface hardener (particularly on floor areas).
- No film breakdown period involved.
- Does not interfere with subsequent concrete surface treatments (paints, emulsions, sealants adhesive, renders, tile adhesives etc.).

Packaging

50, 100, 200 Kgs Barrel

Mould Release Agent For Concrete Formwork



BLUSKY™ DEMOLD SPL 09

Description:

DEMOLD SPL09 is a specially formulated low viscous mold release agent for precast & All concrete segments. It is a blend of additives and chemicals having good releasing properties, which are superior to those of conventional mould oil.

Uses

- Poured concrete Precast & Pre-stressed concrete
- All types of formworks like Steel, Plastic, timber Fiber glass
- Boards for concrete block manufacturing

Packaging

50, 100, 200 Kgs Barrel

Advantages

Provides a clean positive release even in intricate and difficult casting condition. Reduces labour cost, cleaning time and possible damages to the formwork. It can be easily be applied by sprayers, on account of the high rate of coverage, the applied cost of '**DEMOLD SPL 09**' compares favorably with that of conventional mould oil. Having regard to the technical benefits additionally obtained the overall economy of using '**DEMOLD SPL 09**' can be significant. It forms fast stable thin film when dried up. It does not corrode steel. It enables fast and easy stripping of formwork. Due to its excellent release properties, little or no deposit of cement paste remains on the shutter surface.

Concrete Pump Primer And Pumping Aid For Concrete Pumping



BLUSKY™ PUMP PRIME

Description:

PUMP PRIME is uniquely formulated to provide the concrete pumper with a cost effective replacement for premium priced grout, primer slurries or bagged cement primers. **PUMP PRIME** contains no bentonite, cementitious materials, soaps or air entraining agents.

Advantages

PUMP PRIME functions as a concrete pumping aid by creating thin lubrication film inside the pump and pipelines and reduce line pressure which enables the placement of hard to pump mixes and increasing the range of pump ability

Uses

- All cement types
- Ready mix concrete
- All conventional concrete materials

Dosage

Each 100 gm **PUMP PRIME** to be mixed with 30 liters of water either in drum or in the hopper of the concrete pump.

Packaging

100 Gms Pouch

Admixture Specifically Designed For Dry Cast Concrete



BLUSKY™ FLOWCAST 335

Description:

FLOWCAST 335 is an admixture specifically designed for dry cast concrete. **FLOWCAST 335** allows optimization of the dosage of cement in order to obtain a specific class of resistance. **BLUSKY™ FLOWCAST 335** increases mechanical strength. **FLOWCAST 335** eases the placing of dry concrete.

Uses

All cement types excluding white cement Machine manufactured and dry cast Precast

Advantages

0.1 to 1.50 Kg for 100 Kg of cement. This product is completely miscible in water. This product must be added to the mixing water before adding to the mixer. The optimum dosage of this product can only be established after trial tests, taking into account the rheological characteristics and the required mechanical performances of the concrete.

Packaging

20 Kg Bucket, 225 Kgs Barrel & bulk in 10 KL tanker

Low To Zero Slump Concrete Process Performance



BLUSKY™ FLOWCAST 117

Description:

FLOWCAST 117 has been specifically designed for low to zero slump concrete (dry cast). Its unique formulation increases the robustness of concrete in regard of moisture content while allowing for superior compaction.

Uses

All types of cement
Blocks production
Paving blocks production
Zero slump concrete

Dosage

Between 0.2 and 0.8 Kg for 100 Kg of cement.
For other dosages, please consult with our Local Team.

Advantages

- **FLOWCAST 117** allows for water content optimization without fresh concrete deformation leading to better strengths: Industrial trials have evidenced up to 15% strengths gain at 2 and 5 days.
- Associated with optimized moisture content
- **FLOWCAST 117** allows for reduced cycle time, superior finish, strengths and overall performances consistency.
- **FLOWCAST 117** enables cementitious content optimization.

Packaging

215 Ltr Barrel & bulk 10 KL tanker

COMPLETE SOLUTION FOR YOUR STRUCTURE

Category	Sub-Category	Products for your Construction	Description
WATERPROOFING	LIQUID	BLUSKY™ Flowcrete	Acrylic polymer based compound for waterproofing and repairing
		BLUSKY™ Flowcrete 2K	Two component elastomeric cementitious waterproofing system
		BLUSKY™ Flowcrete 2K XL	Two component, High performance, elastomeric cementitious waterproofing system
		BLUSKY™ Flowbond Latex	All purpose waterproofing and bonding compound
		BLUSKY™ Flexy Primer	Water based general purpose single component primer for elastomeric coating
		BLUSKY™ Flowthane - BI	Two component solvent based impregnating / penetrating epoxy primer
		BLUSKY™ Flowthane PU1K	Single component, high solid content moisture cured liquid waterproofing elastomeric membrane
		BLUESKY™ Flowcote BPC	High build cold applied bitumen primer cum protective coating
		BLUESKY™ Deckflex DF	Premium waterproofing system for RC panel roof
		BLUSKY™ Flexycoat HIC	Solar heat reflecting waterproof elastomeric coating
		BLUSKY™ Flowthane AR	Liquid applied polyurethane based elastomeric anti-root protective coating
		BLUSKY™ Flowcoaltar	Chemical resistant coal-tar epoxy protective coating
		BLUSKY™ Sealcoat ARBR	Acrylic resin based water repellent coating for plaster and concrete surface
		BLUSKY™ Flowcrystal Plus	High performance, cementitious waterproofing coating system through crystallization
	INTEGRAL	BLUSKY™ Flow Xcel	Normal setting integral waterproofing compound for cement mortar & concrete in liquid form
		BLUSKY™ Flow Xcel Plus	Low dosages normal setting integral waterproofing compound for cement mortar & concrete in liquid form
		BLUSKY™ Flowcrystal Admix	Crystalline integral waterproofing compound for cement concrete and mortar
	PREFORMED MEMBRANE	BLUSKY™ Flowshield APP	APP modified bituminous membrane for waterproofing
		BLUSKY™ Powershield Stick	Self adhesive polymer modified bituminous membrane for waterproofing
		BLUSKY™ Powershield TPO	Flexible polyolefin membranes (TPO-PP) non-reinforced. This is co-extrusion of Poliscudo R polyolefin alloy.
		BLUSKY™ Powerflex PVC	Geomembrane with twin signal color (twin color) for tunnel and basement waterproofing
		BLUSKY™ Powerflex EPDM	EPDM based waterproofing roof and lining membrane
		BLUSKY™ Flowshield Prebond HDPE	Pre-applied fully bonded HDPE self adhesive membrane
PROTECTIVE COATING		BLUSKY™ Aqua Pro	Water based high build epoxy protective coating system
		BLUSKY™ Aquafil WB	Silane/siloxane based water repellent compound for masonry & concrete
		BLUSKY™ Flow Proxycoat 418	Solvent free high build epoxy coating fr floors and walls

Category	Sub-Category	Products for your Construction	Description
PROTECTIVE COATING		BLUSKY™ Flowcoastal	Heavy bodied polymer based compound for corrosion protection of steel and concrete
		BLUSKY™ Flowcoaltar	Chemical resistant coal tar epoxy coating for concrete and masonry
FLOORING	FLOOR HARDENERS	BLUSKY™ Prolite TOP	Abrasion and wear resistant metallic floor hardener
		BLUSKY™ Prolite RTU	Ready to use dry shake non-metallic compound for abrasion resistant
		BLUSKY™ Prolite	Graded mineral aggregate for abrasion and wear resistant flooring
		BLUSKY™ Prolite SOF	Pre-mixed non-metallic dry shake floor hardener
		BLUSKY™ Hardseal	Surface hardener and dust proofer for concrete flooring
	CEMENTITIOUS	BLUSKY™ Flowscreed SLF	Cement based self-leveling under layment
	EPOXY FLOORING COATING	BLUSKY™ Flowpoxy Coat Primer	Epoxy based primer.
		BLUSKY™ Flowpoxy Coat 525	Solvent free self leveling epoxy floor coating system
GROUTS	CEMENTITIOUS	BLUSKY™ Flowxcem C	Polymer modified, non-shrink expansion admixture for injection cement grouting
		BLUSKY™ Xcem GP	Non-shrink general purpose ready to use cementitious free flow grout
		BLUSKY™ Flowgrout 180	Non-shrink high strength ready to use cementitious free flow precision / anchor grout
		BLUSKY™ Xcem GP80	Non-shrink ultra high strength ready to use cementitious free flow grout
		BLUSKY™ Xcem HES	Non-shrink free flow cementitious grout ready to use high early strength grout
		BLUSKY™ Xcem HR	Cement based heat resistant, free flowing, high speed, non-metallic, non-shrink, non-chloride grout
	EPOXY	BLUSKY™ Poxycrrete 212	Self leveling high strength pourable/injectable epoxy grouting compound
		BLUSKY™ Poxycrrete 215	High strength pourable epoxy grouting compound
REPAIR & REHABILITATION		BLUSKY™ PU Grout - S	Aqua reactive PU based expanding grouting compound
		BLUSKY™ Poxycrrete EBA	High strength epoxy bonding agent for old and new concrete
		BLUSKY™ Xcem MC 60	Single component high strength pre-mixed flowable micro concrete
		BLUSKY™ Xcem PMC 60	Polymer modified fiber reinforced high strength concrete repair mortar
		BLUSKY™ Rustkill	A smart rust & stain remover
		BLUSKY™ Poxycrrete 101	Solvent free high strength epoxy repair mortar
		BLUSKY™ Poxycrrete 21	Solvent free injectable epoxy grouting compound for cracks and voids
		BLUSKY™ Poxycrrete 21LV	Low viscosity solvent free injectable epoxy grouting compound
		BLUSKY™ Poxycrrete 2115	Solvent free hight build high strength epoxy mortar for concrete structures

COMPLETE SOLUTION FOR YOUR STRUCTURE

Category	Sub-Category	Products for your Construction	Description
REPAIR & REHABILITATION		BLUSKY™ Poxycrte 21P	Epoxy based primer
SEALANTS		BLUSKY™ Policulck EP	Epoxy based sealing compound for joints & cracks
		BLUSKY™ Policulck PS	Two part polysulphide based fuel resistant joint sealant
		BLUSKY™ Policulck PU	Single component polyurethane sealant for horizontal and vertical surface
TILE ADHESIVE		BLUSKY™ Powerfix (Silver)	Single pack, pre-mixed water resistant cementitious polymer modified tile adhesive
		BLUSKY™ Powerfix (Gold)	Single pack, pre-mixed water resistant cementitious high polymer modified stone / tile adhesive
		BLUSKY™ Powerfix (Platinum)	High performance, Single Pack, Pre Mixed Water Resistant Cementitious Polymer Modified Stone/Tile Adhesive
		BLUSKY™ Powerfix (Diamond)	High performance, Single Pack, Pre Mixed Water Resistant Cementitious Polymer Modified Stone/Tile Adhesive
EXPANSE & CONSTRUCTION JOINT SYSTEMS		BLUSKY™ Reinject	Specially designed flexible solid pvc nitrile blend (thermo-plastic rubber) covered by sponge strips strengthened by nylon braiding is installed in concrete joints to waterproof and seal cracks or voids.
		BLUSKY™ Aquaswell Mastic	Off white gun applied mastic with good adhesion to concrete steel, glass, PVC, HDPE in contact with water
		BLUSKY™ Aquaswell Seal	Flexible strip made of a hydrophilic expanding rubber which expands when comes in contact with water
		BLUSKY™ Polibond EXP	Homogenous high performance expansion joint system, functionalized thermoplastic elastomeric joint selling tape
CONCRETE ADMIXTURE	POLY CARBOXYLATE ETHER BASE	BLUSKY™ Flowcrete D811	New generation polycarboxylate ether based multi range plasticizing admixture
		BLUSKY™ Flowcrete G665	Hybrid poly carboxylate polymers based admixture for concrete
		BLUSKY™ Flowcrete K9323	High range new generation super plasticizing admixture
	POLY NEPTHALENE BASE	BLUSKY™ Flowcrete HS 1260	Sulphonated polynaphthalene based water reducing plasticizing admixture
		BLUSKY™ Flowcrete RMC 5321	Sulphonated polynaphthalene based multi range old generation plasticizing admixture
		BLUESKY™ Flowcrete RMC 3139	Sulphonated Polynaphthalene multi range old generation plasticizing admixture
CURRING COMPOUND		BLUSKY™ Flowcure - W	Curing agent - Wax based / Water based & White pigmented
		BLUSKY™ Flowcure - AC	Curing agent - Acrylic emulsion / Water based & White pigmented
	FOAM WORKS RELEASE AGENT	BLUSKY™ Demold SPL 09	Mould release agent for concrete formwork
	PUMP PREMIER FOR CONCRETE PUMPING	BLUSKY™ Pump Prime	Concrete pump primer and pumping aid for concrete pumping
PRECAST		BLUSKY™ Flowcast - 335	Admixture specifically designed for dry cast concrete
		BLUSKY™ Flowcat - 117	Admixture specifically designed for low to zero slump concrete process performance

Factory & Office - Unit-1

BLUSKY™ SPECIALTY CHEMICALS PRIVATE LIMITED

City Survey No 369, Nr Munaf Enterprise, Sureli Road, Vejalpur,
Kalol Panch Mahals, Panchmahals, Gujarat-389330, INDIA

☎ +91 8700384657

✉ customer.care@bluskyscpl.com
info@bluskyscpl.com

Ahmedabad Warehouse

BLUSKY™ SPECIALTY CHEMICALS PRIVATE LIMITED

6B, Siddheshwari Estate, Survey No. 145,
Nr. Popular Paradise, Opp. Vishwas City,
Gota, Ahmedabad - 382481, Gujarat, INDIA

☎ +91 8700384657

✉ customer.care@bluskyscpl.com
info@bluskyscpl.com

Factory & Office - Unit-2

BLUSKY™ SPECIALTY CHEMICALS PRIVATE LIMITED

Plot No G/205-207 Phase-II Riico Industrial Area,
Alwar, Rajasthan - 301701, INDIA

☎ +91 8700384657

✉ customer.care@bluskyscpl.com
info@bluskyscpl.com

Corporate and Registered Office

BLUSKY™ SPECIALTY CHEMICALS PRIVATE LIMITED

T/F Unit No. 330, Vardhaman, Plus Citi Mall LSC,
Sector-23, Dhulsiras, New Delhi - 110077, INDIA

☎ +91 8700384657

✉ customer.care@bluskyscpl.com
info@bluskyscpl.com

Factory & Office - Unit-3

BLUSKY™ SPECIALTY CHEMICALS PRIVATE LIMITED

Plot No - D48 Phase - II, Sandila, Hardoi,
Lucknow, Uttar Pradesh -241204, INDIA

☎ +91 8700384657

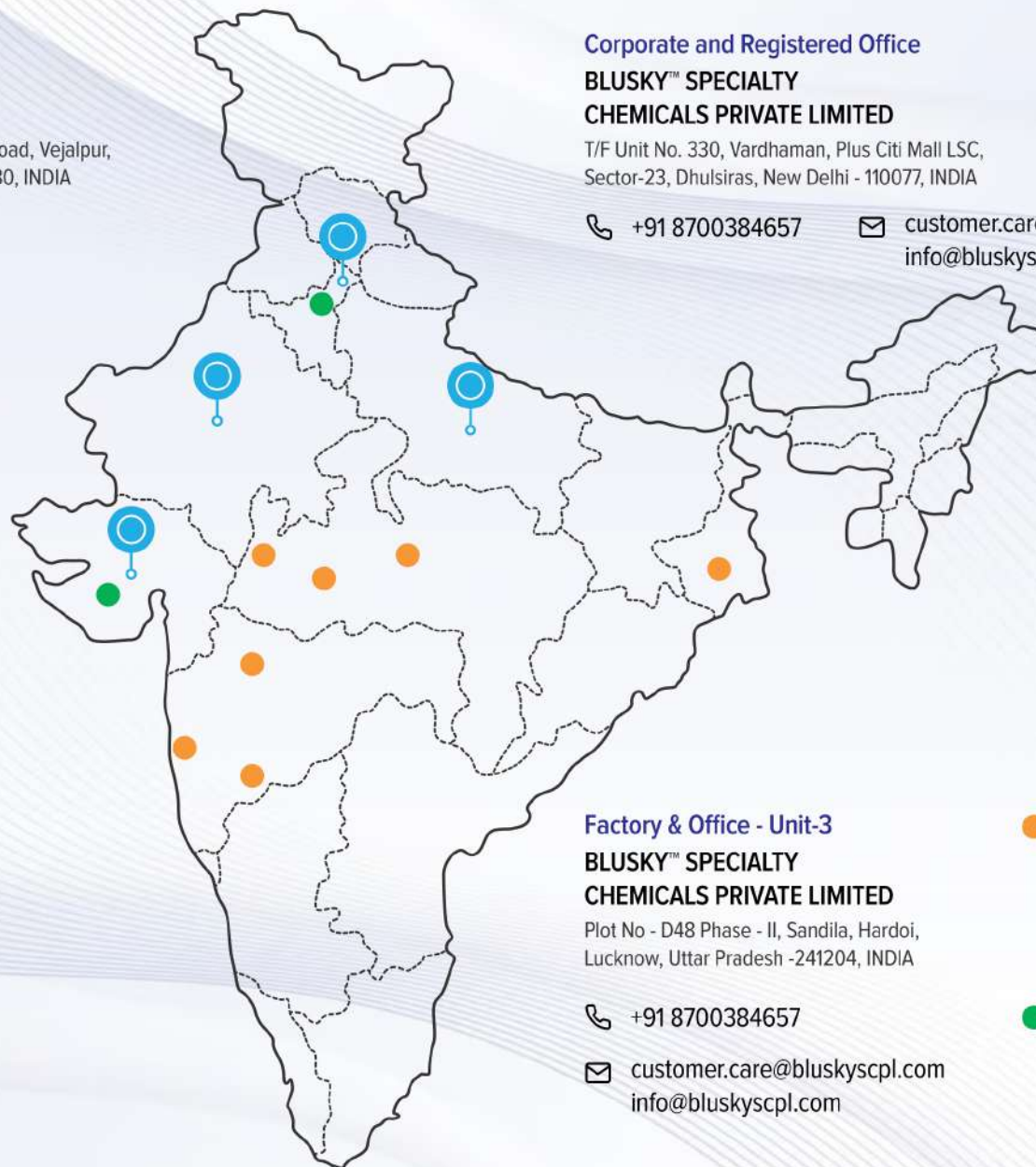
✉ customer.care@bluskyscpl.com
info@bluskyscpl.com

● Sales & Technical Team

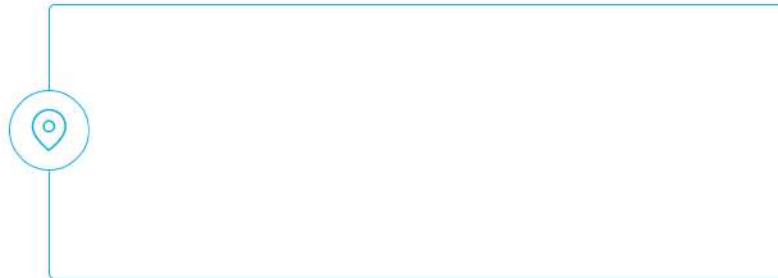
- Mumbai
- Pune
- Nashik
- Kolkata
- Bhopal
- Indore
- Ratlam

● RnD & Laboratory

- Gujarat
- Delhi



Associate Partner



Our Presence at

Delhi | Haryana | Rajasthan | Gujarat
Madhya Pradesh | Maharashtra | West Bengal

**QUALITY
INTEGRITY
SERVICE**



AN ISO 9001:2015 & ISO 14001:2015 CO.

Corporate and Registered Office

**BLUSKY™ SPECIALTY
CHEMICALS PRIVATE LIMITED**

T/F Unit No. 330, Vardhaman, Plus Citi Mall LSC,
Sector-23, Dhulsir, New Delhi - 110077, INDIA

+91 8700384657 

customer.care@bluskyscpl.com 
info@bluskyscpl.com